

Non-Insulated Flag Ring Terminals

2216 AWG Non-Insulated Flag Ring

Material: Tin Plated Copper with Brazed Seam

Insulation Material: None

Maximum Electrical Current: 18 Amps

Maximum Temperature Rating: 176°C

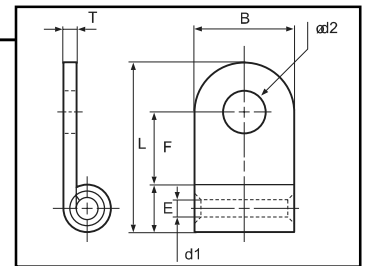
Material Thickness (T): .031

Barrel ID (d1): .067

Barrel OD (E): .139

J Type: .067

J Type: .134



| HOFFMAN PART NO. | STUD SIZE | DIMENSIONS (INCHES) | | | | LENGTH | UL | HAND TOOL |
|------------------|-----------|---------------------|-------------------|---------------------|-------|--------|--------|-----------|
| | | STUD DIAMETER d2 | TONGUE WIDTH W | STUD CLEARANCE F | L | | | |
| FG2216-4 | 8 | 0.169 | 0.378 | 0.291 | 0.610 | Y | YG2216 | |
| FG2216-5 | 10 | 0.209 | 0.378 | 0.315 | 0.642 | Y | YG2216 | |

1614 AWG Non-Insulated Flag Ring

Material: Tin Plated Copper with Brazed Seam

Insulation Material: None

Maximum Electrical Current: 30 Amps

Maximum Temperature Rating: 176°C

Material Thickness (T): .031

Barrel ID: .091

Barrel OD: .161

J Type: .091

J Type: .161

| HOFFMAN PART NO. | STUD SIZE | DIMENSIONS (INCHES) | | | | LENGTH | UL | HAND TOOL |
|------------------|-----------|---------------------|-------------------|---------------------|-------|--------|--------|-----------|
| | | STUD DIAMETER d2 | TONGUE WIDTH W | STUD CLEARANCE F | L | | | |
| FG1614-4/J | 8 | 0.169 | 0.378 | 0.291 | 0.638 | Y | YG2216 | |
| FG1614-5 | 10 | 0.209 | 0.378 | 0.287 | 0.642 | Y | YG2216 | |
| FG1614-5/J | 10 | 0.209 | 0.378 | 0.291 | 0.638 | Y | YG2216 | |
| FG1614-6 | 1/4 | 0.252 | 0.378 | 0.287 | 0.642 | Y | YG2216 | |
| FG1614-6/J | 1/4 | 0.252 | 0.378 | 0.291 | 0.638 | Y | YG2216 | |

1210 AWG Non-Insulated Flag Ring

Material: Tin Plated Copper with Brazed Seam

Insulation Material: None

Maximum Electrical Current: 50 Amps

Maximum Temperature Rating: 176°C

Material Thickness (T): .039

Barrel ID: .139

Barrel OD: .220

J Type: .134

J Type: .220

| HOFFMAN PART NO. | STUD SIZE | DIMENSIONS | | | | LENGTH | UL | HAND TOOL |
|------------------|-----------|---------------------|-------------------|---------------------|-------|--------|--------|-----------|
| | | STUD DIAMETER d2 | TONGUE WIDTH W | STUD CLEARANCE F | L | | | |
| FG1210-4/J | 8 | 0.169 | 0.378 | 0.291 | 0.701 | Y | YG1210 | |
| FG1210-5 | 10 | 0.209 | 0.378 | 0.291 | 0.701 | Y | YG1210 | |
| FG1210-5/J | 10 | 0.209 | 0.378 | 0.291 | 0.701 | Y | YG1210 | |
| FG1210-6 | 1/4 | 0.252 | 0.378 | 0.291 | 0.701 | Y | YG1210 | |
| FG1210-6/J | 1/4 | 0.252 | 0.378 | 0.291 | 0.701 | Y | YG1210 | |

